

Meetinghouse

Apartments and Townhouses

Maintenance Emergencies: If the office is closed, call 610-359-3621.

Public Transportation: Meetinghouse is about a 5 minute drive from the Claymont, DE or Marcus Hook SEPTA Regional Rail station.

Cars: Washing or repairing any motor vehicle on the property is prohibited and a violation of the lease agreement. All vehicles must be properly tagged, inspected and in working condition at all times. You may not store unused vehicles on the property. All vehicles must have a Meetinghouse parking sticker.

Packages: The office does not accept packages for tenants. If you are permitting a delivery or allowing someone to enter your unit when you are not home, the office must have a written permission letter for that day.

Playground: The Meetinghouse playground closes at dusk. This is strictly enforced.

Children & Keys: The office must have a written permission letter in order to give your child a key should he/she get locked out or lose a key. There are no exceptions, nor will maintenance be able to open the door.

Heating & Air Conditioning: If you are unsure how to operate your thermostat, contact the office.

Renter's Insurance: You must keep your renter's insurance policy valid while living at Meetinghouse.

Kerosene Heaters: State regulation prohibits kerosene heaters in multi family dwellings.

Laundry Facilities: Laundry facilities are generally located in the center of buildings A, B, C, D, E, F, G and H. The facilities are open from 8:00am -9:00pm.

Lock Outs: If the office is opened, we will gladly give you a key if you are locked out. If the office is closed, there is a \$20 fee, payable directly and immediately to the maintenance worker who opens your door.

Maintenance Requests: All requests for maintenance must be called into the office at 610-485-5838 or submitted on our website, www.meetinghouseapartments.com. Our maintenance men will not perform any services that are not submitted to the office.

Pool: Information regarding the pool will be delivered to your unit or sent via email in May. The pool is for your pleasure; outside memberships are not accepted.

Trash Bins: Dumpsters are located outside in locations accessible to all buildings.

If you have any additional questions or concerns, please do not hesitate to contact the rental office.

Thank you,
Carol DeMaio, Resident Manager
cdemaio@kaiserman.com

3131 Meetinghouse Road
Boothwyn, PA 19061
610-485-5838 Fax 610-485-2985
www.meetinghouseapartments.com

Meetinghouse

Apartments and Townhouses

Important Notice

To: Residents of Meetinghouse
From: Carol A. DeMaio, Resident Manager
RE: Security Cell Phone

Dear Residents,

Please be advised that along with the scanned Security Patrols, our guard has a cell phone. Calling the guard **should not** replace calling 911. If you have a security concern you **must** call 911 first, then the guard. The cell phone is for **emergencies only**.

The number is: 610-405-6618
Working hours are: 6:00pm - 6:00am

Do not call the guard for maintenance emergencies. Please call 610-359-3621 for maintenance emergencies.

Thank you.

3131 Meetinghouse Road
Boothwyn, PA 19061
610-485-5838 Fax 610-485-2985
www.meetinghouseapartments.com



MEETINGHOUSE
APARTMENTS & TOWNHOUSES

AUGUST 11, 2014

Dear Residents,

Meetinghouse Apartments has a new parking policy for you, our residents, and your visitors, that we believe will keep our community safer. This policy will become effective on September 1, 2014.

All residents should have parking stickers, which need to be displayed on car, on the driver's side back window, lower corner. If you have lost your sticker, please stop by the office for a new one. Going forward, there will be a \$20.00 charge for a replacement stickers, so please be sure to keep your sticker on your car.

From now on, to ensure we do not have uninvited folks from outside our community driving through and parking, visitors will need to have a parking pass. You can request a Visitor Pass from the office, at your convenience (and at no charge), to ensure that your visitors are able to park on our grounds. Please be sure that your visitors always use these tags, which will be numbered and assigned to each apartment home, to ensure that our management and security teams do not mis-identify a car as not having permission to be at Meetinghouse. A visitor is an overnight guest

All visitors must park away from the buildings, preserving the closest parking spots for residents.

In order to enforce this policy, we have contracted with a towing company and authorized them to tow cars within our community that do not have proper parking tags hanging on the rear view mirror. Once a tow has occurred, we cannot reverse the charges as the charge is directly to the towing company; that charge will be at the expense of the car owner.

If you have any questions, please feel free to contact the rental office.

Thank you.

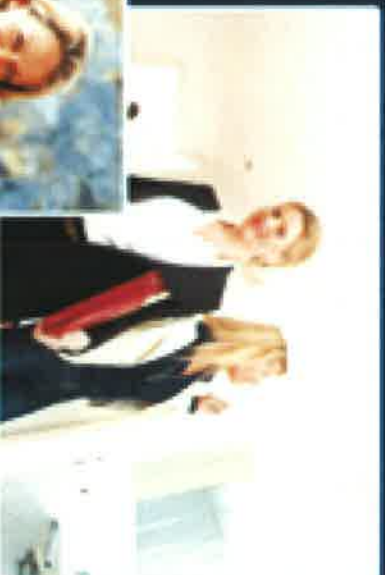
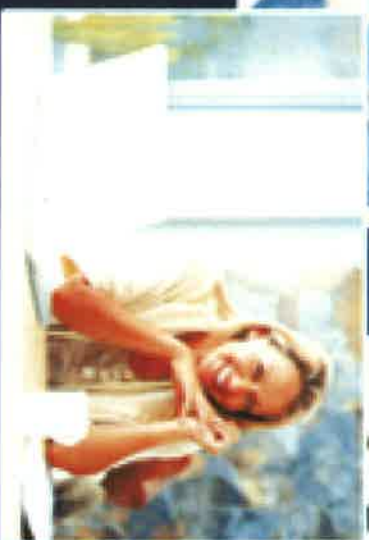
Sincerely,

Carol De Maio, Property Manager
cdemaio@kaiserman.com



eGifts

HAVE AN ACCOUNT?
LOG IN



The Ultimate Rewards Experience!

Experience a revolutionary way of using incentives that is **EASY, FUN, & FAST!**

Use your rewards to purchase what you want when you want from national retailers offering thousands of brands and millions of choices.

Please login above to award or receive an eGift.

1.800.FLOWERS.COM

ATHLETA

ARK
KAYAKS REEFER

Health
KING

Cabela's

cinda b

FANATICS

GAP

Global
HOTELCARD
GOLF & FITNESS

Golfsmith

K
KISSMET

LANDSTED

OLD NAVY

DOGHOUSE
STEAKS

overstock.com

PIPER HEIDSIECK

RAM
RODS

FILIPINO
SISAY

RESTAURANTS.COM

sears

SPORTS
AUTHORITY

west elm